

SERIE **XP-4D** TANDEM **3.1.7.1.**

CODICE DI ORDINAZIONE - *DECODING*

3.1.7.1 . XXX . X . 0 . 1 . 0

DIN
5 4 6 2
SE

- XP-4D 15
- XP-4D 22
- XP-4D 36
- XP-4D 43
- XP-4D 57
- XP-4D 65
- XP-4D 83
- XP-4D 102

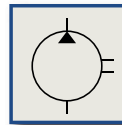
ALLESTIMENTI SPECIALI/SPECIAL OPTIONS
1 = MONTAGGIO IN TANDEM/TANDEM FITTING

ROTAZIONE/ROTATION
1 = SINISTRO/ANTICLOCKWISE
2 = DESTRO/CLOCKWISE

CILINDRATA/DISPLACEMENT

CODICE BASE/BASIC CODE

Pompa ad Ingranaggi *Gear Pump*

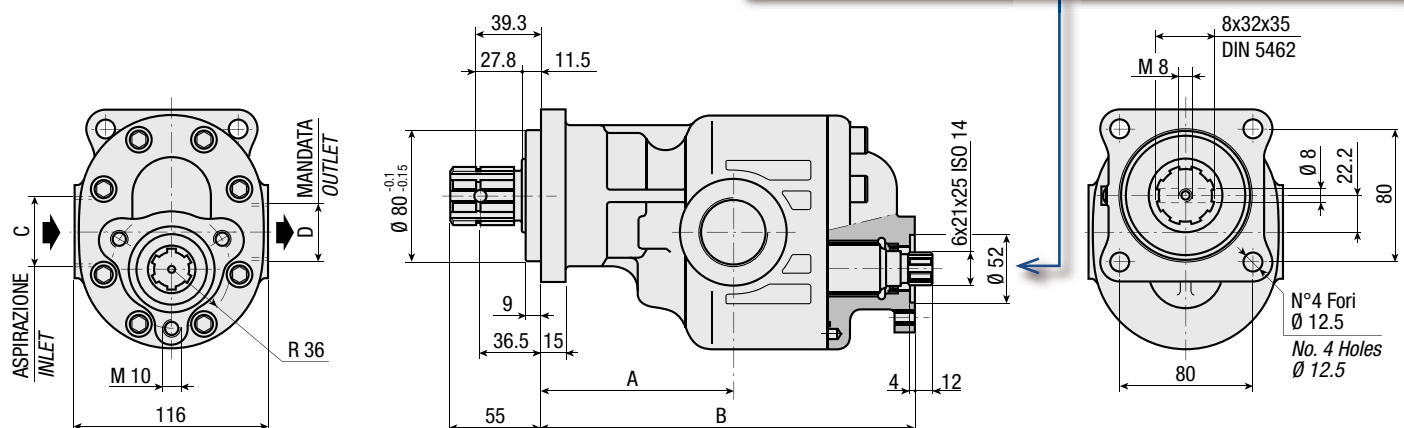


CARATTERISTICHE E DATI TECNICI - *SPECIFICATIONS AND TECHNICAL DATA*

TIPO TYPE	CODICE CODE	CILINDRATA DISPLACEMENT cm ³ /rev.	A mm	B mm	C ASPIRAZIONE INLET	D MANDATA OUTLET	PESO WEIGHT kg
XP-4D 15	3.1.7.1.015.X.0.1.0	15	102	167	3/4" G	3/4" G	10
XP-4D 22	3.1.7.1.022.X.0.1.0	22	102	172	3/4" G	3/4" G	10.5
XP-4D 36	3.1.7.1.036.X.0.1.0	36	107	182	1" G	1" G	11.4
XP-4D 43	3.1.7.1.043.X.0.1.0	43	107	187	1" G	1" G	11.9
XP-4D 57	3.1.7.1.057.X.0.1.0	57	117	197	1" G	1" G	12.8
XP-4D 65	3.1.7.1.065.X.0.1.0	65	117	202	1" G	1" G	13.2
XP-4D 83	3.1.7.1.083.X.0.1.0	83	117	217	1" 1/4 G	1" G	14.5
XP-4D 102	3.1.7.1.102.X.0.1.0	102	117	229	1" 1/4 G	1" G	15.5

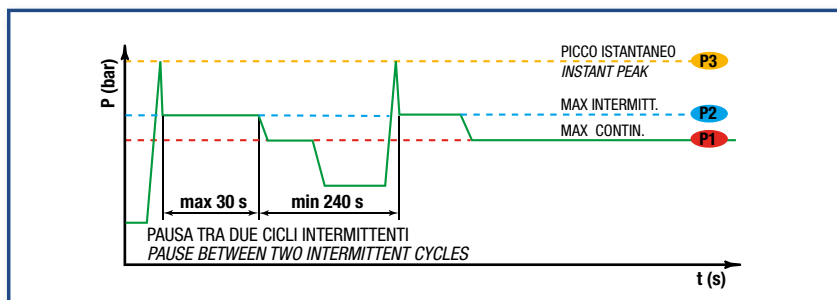
KIT ACCOPPIAMENTO POSTERIORE *REAR MOUNTING KIT*

2.05.P002.0000



DATI TECNICI - TECHNICAL DATA

ESEMPIO CICLI LAVORO - EXAMPLE OF WORKING CYCLES



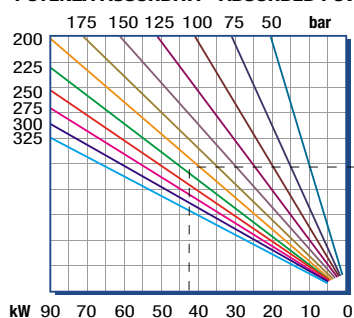
Pressione d'aspirazione: <i>Inlet pressure:</i>	0.7 ÷ 1.5 bar (assoluti/absolute)
Campo viscosità lavoro: <i>Operating viscosity range:</i>	12 ÷ 100 cSt
Temperatura fluido °C (t): <i>Fluid temperature °C (t):</i>	-10° + 80° C

Pressione Lavoro <i>Working Press.</i>	P2	Contaminazione - Contamination		Filtro - Filter $\beta_x = 75$
		NAS 1638	ISO 4406	
≤ 200 bar		12	21/18	40 μm
≥ 200 bar		11	20/17	25 μm

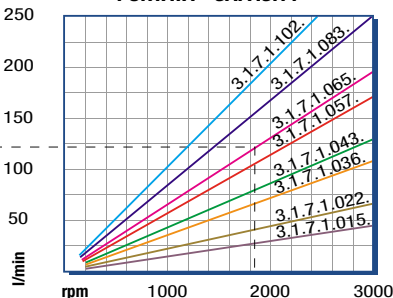
◀ **FILTRAZIONE CONSIGLIATA (ritorno o mandata)**
RECOMMENDED FILTERING (return or outlet)

TIPO - TYPE			XP-4D 15	XP-4D 22	XP-4D 36	XP-4D 43	XP-4D 57	XP-4D 65	XP-4D 83	XP-4D 102
Cilindrata <i>Displacement</i>	Vg	cm ³ /n cm ³ /rev.	15	22	36	43	57	65	84	102
Pressione massima continua <i>Max continuous operating pressure</i>	P1	bar	315	305	300	280	260	240	220	180
Pressione massima intermittente <i>Max intermitt. operating pressure</i> (max 30 s)	P2		340	330	325	305	285	265	240	200
Pressione massima di picco <i>Max peak pressure</i> (≤ 0.1 s)	P3		450	450	450	400	380	330	300	250
Velocità massima intermittente <i>Max intermittent speed</i> (P ≤ 20 bar)	n3	n/min r.p.m.	3000	3000	3000	3000	3000	3000	3000	2500
Velocità massima continua <i>Max continuous speed</i> (≤ P1)	n1		2500	2500	2500	2500	2500	2500	2500	2000
Velocità minima intermittente <i>Min intermittent speed</i> (≤ P2 x 0.5) (max 30 s)	n4		500	500	450	450	450	400	400	400

POTENZA ASSORBITA - ABSORBED POWER

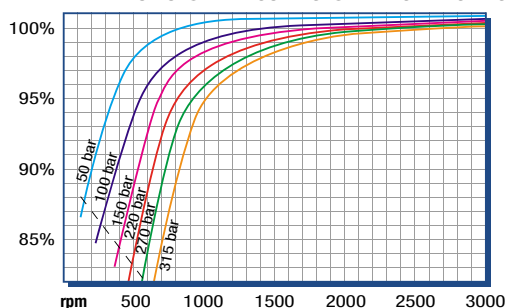


PORTATA - CAPACITY

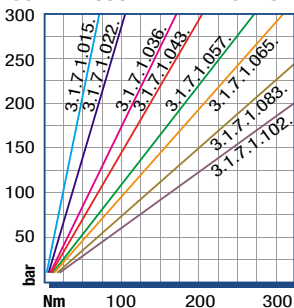


DIAGRAMMI - DIAGRAMS

RENDIMENTO VOLUMETRICO - VOLUMETRIC EFFICIENCY



COPPIA ASSORBITA - INPUT TORQUE



RILIEVI ESEGUITI CON OLIO
ISO VG 46 A 50° C ($\nu=30$ cSt)
THE ABOVE SPECIFICATIONS
REFER TO OIL TYPE ISO
VG 46 AT 50° C ($\nu=30$ cSt)