

SERIE ISO-EV 3.1.2.6.

CODICE DI ORDINAZIONE - DECODING

3.1.2.6 . XXX . X . XX . 0

DIN
5 4 6 2
SE

ISO-EV 73
ISO-EV 84
ISO-EV 100
ISO-EV 116

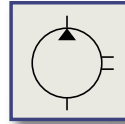
ALLESTIMENTI SPECIALI/SPECIAL OPTIONS
09 = CON ELETTROVALVOLA DI BY-PASS 24 V
 WITH BY-PASS ELECTRIC VALVE 24 V
10 = CON ELETTROVALVOLA DI BY-PASS 12 V
 WITH BY-PASS ELECTRIC VALVE 12 V

ROTAZIONE/ROTATION
1 = SINISTRO/ANTICLOCKWISE
2 = DESTRO/CLOCKWISE

CILINDRATA/DISPLACEMENT

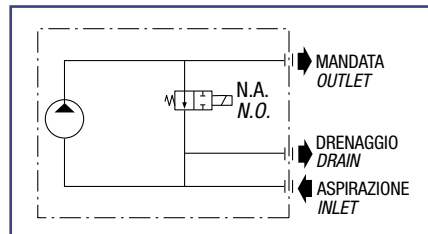
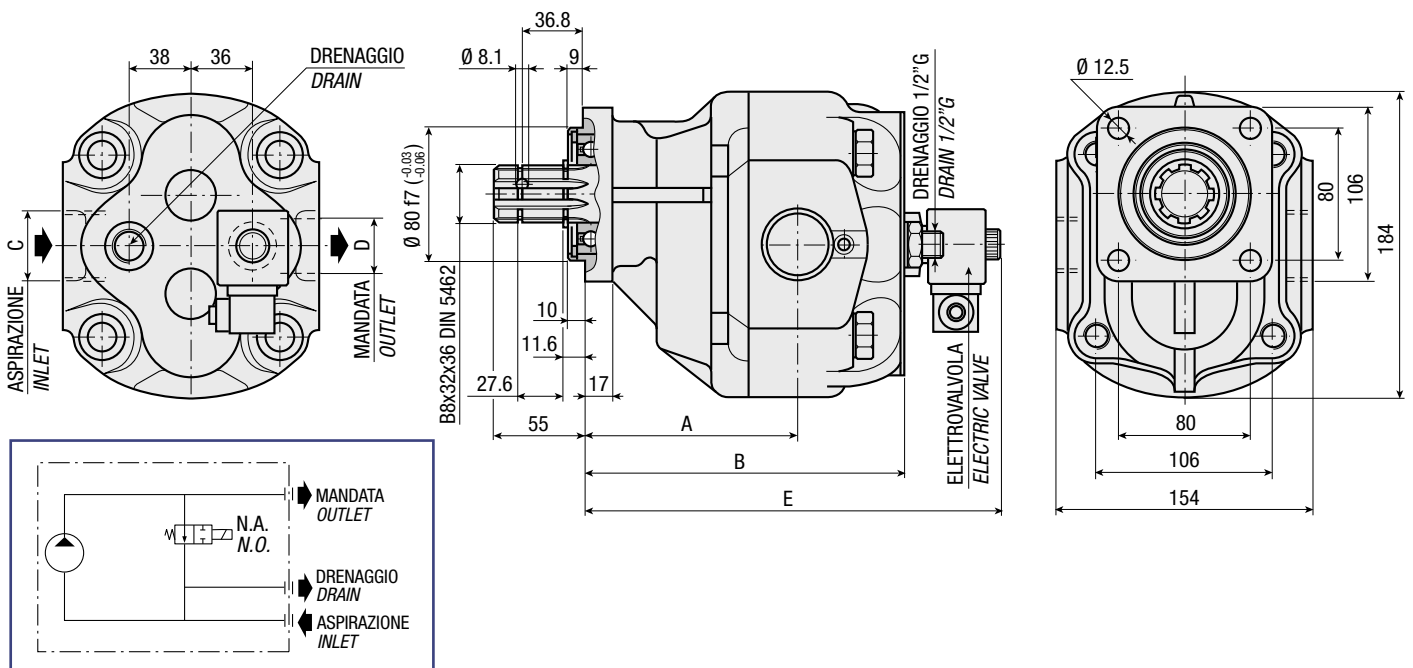
CODICE BASE/BASIC CODE

**Pompa ad Ingranaggi
 con Electrovalvola di By-pass
 Gear Pump
 with By-pass Electric Valve**



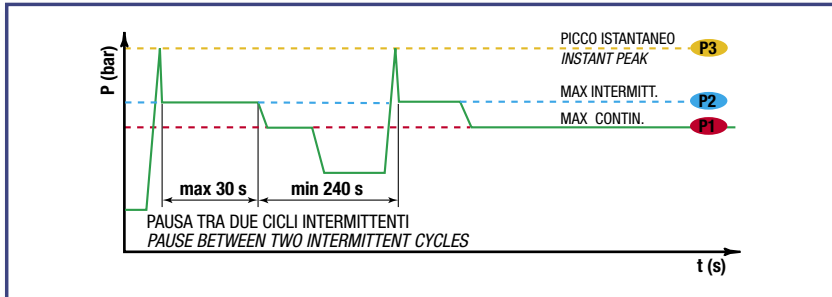
CARATTERISTICHE E DATI TECNICI - SPECIFICATIONS AND TECHNICAL DATA

TIPO TYPE	CODICE CODE	CILINDRATA DISPLACEMENT cm ³ /rev.	A mm	B mm	C ASPIRAZIONE INLET	D MANDATA OUTLET	E mm	PESO WEIGHT kg
ISO-EV 73	3.1.2.6.073.X.XX.0	73	126	190	1" G	3/4" G	250	21.6
ISO-EV 84	3.1.2.6.084.X.XX.0	84	130	194	1" 1/4 G	1" G	254	22.3
ISO-EV 100	3.1.2.6.100.X.XX.0	100	130	200	1" 1/4 G	1" G	260	23.3
ISO-EV 116	3.1.2.6.116.X.XX.0	116	206	206	1" 1/4 G	1" G	266	24.3



DATI TECNICI - TECHNICAL DATA

ESEMPIO CICLI LAVORO - EXAMPLE OF WORKING CYCLES



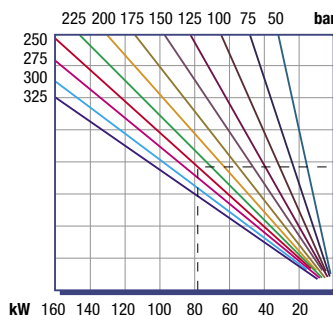
Pressione d'aspirazione: <i>Inlet pressure:</i>	0.7 ÷ 1.5 bar (assoluti/absolute)
Campo viscosità lavoro: <i>Operating viscosity range:</i>	12 ÷ 100 cSt
Temperatura fluido °C (t): <i>Fluid temperature °C (t):</i>	-10° + 80° C

Pressione Lavoro <i>Working Press.</i>	P2	Contaminazione - <i>Contamination</i>		Filtro - <i>Filter</i> βx = 75
		NAS 1638	ISO 4406	
≤ 200 bar		12	21/18	40 μm
≥ 200 bar		11	20/17	25 μm

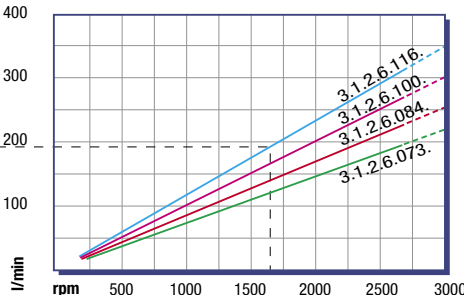
◀ **FILTRAZIONE CONSIGLIATA (ritorno o mandata)**
RECOMMENDED FILTERING (return or outlet)

TIPO - TYPE			ISO-EV 73	ISO-EV 84	ISO-EV 100	ISO-EV 116	
Cilindrata <i>Displacement</i>	Vg	cm ³ /n cm ³ /rev.	73	84	100	116	
Pressione massima continua <i>Max continuous operating pressure</i>	P1	bar	290	270	260	250	
Pressione massima intermittente <i>Max intermitt. operating pressure</i>	(max 30 s)		P2	320	310	290	280
Pressione massima di picco <i>Max peak pressure</i>	(≤ 0.1 s)		P3	450	450	375	340
Velocità massima intermittente <i>Max intermittent speed</i>	(P ≤ 20 bar)	n3	3800	3500	3500	3000	
Velocità massima continua <i>Max continuous speed</i>	(≤ P1)	n1	1800	1800	1500	1500	
Velocità minima intermittente <i>Min intermittent speed</i>	(≤ P2 x 0.5) (max 30 s)	n4	300	300	250	250	

POTENZA ASSORBITA - ABSORBED POWER



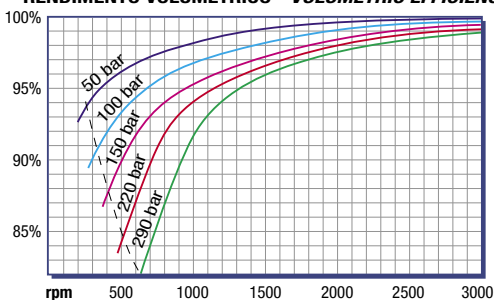
PORTATA - CAPACITY



RILIEVI ESEGUITI CON OLIO
ISO VG 46 A 50° C (ν=30 cSt)
THE ABOVE SPECIFICATIONS
REFER TO OIL TYPE ISO
VG 46 AT 50° C (ν=30 cSt)

DIAGRAMMI - DIAGRAMS

RENDIMENTO VOLUMETRICO - VOLUMETRIC EFFICIENCY



COPPIA ASSORBITA - INPUT TORQUE

